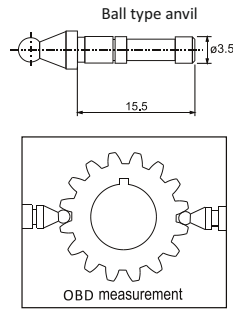


## OVER BALL DIAMETER SNAP GAUGE ( O.B.D.)



### DESCRIPTION

- Optional setting positions in line and 90° to the spindle / measuring axis
- Dials / Probes of Ø8mm stem can be mounted in two
- Lever controlled retraction ensures easy job insertion
- Hardened and ground measuring spindles easily set to any size within its range
- Highly versatile, large range and can be quickly and Versatile instrument used for measuring gear O.B.D. masters and interchangeable anvils are available

Measuring Range mm	Measuring Force N	Anvil Mounting Hole mm
0-40	7.50	3.50
40-80	7.50	3.50
80-130	10.00	3.50
130-180	10.00	3.50
180-230	10.00	3.50

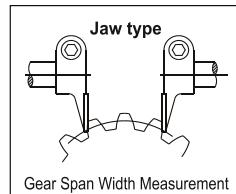
### INTERCHANGEABLE ANVILS TYPE

Spindles are having precision bores for mounting various types of interchangeable anvils, to measure shafts, spline shafts grooves, OBD of gears and other dimensions.

## SPAN SNAP GAUGE



### JAW TYPE



- Versatile instrument used for measuring gear span width
- Lightweight, handy frame
- Highly versatile, large range and can be quickly and easily set to any size within its range.
- Hardened and ground measuring spindles
- Three Flute Tap Measurement

Measuring Range mm	Measuring Force N	Size mm	Measuring Face Flatness µm	Parallelism µm
0-40	7.50	12 x 12	0.5	4
40-80	7.50	12 x 12	0.5	5
80-130	10.00	12 x 12	0.5	5
130-180	10.00	12 x 12	0.5	5
180-230	10.00	12 x 12	0.5	6

Useful for measurement of diameters of shoulders on shafts, small hubs and determination of tooth thickness on gears. Extended carbide tipped measuring jaw.

## GEAR SHAFT MEASURING MACHINE



### Technical Specifications

Centre Height : 150 mm  
Distance Between Centres : 0-350 mm  
Repeatability : .002mm

This is a universal machine used for measuring gear shaft runout & diameters. (By Comparison Method)

### Features

- Sturdy shop floor design. Surface plate & center heads are made from closed grounded, seasoned & stress relieved iron casting son working face
- The center stock spindle is ground lapped to ensure accuracy of the spindle height
- One center is spring loaded for accommodating the different length shafts

**Usage :** Diameter of all shafts, Radial runout & axial runout (Optional with extra attachment )

# UPGRADATION OF GEAR TESTER



Up-gradaton of Old CNC Gear Tester under taken by Aditya Engineering Company with the following scope :-

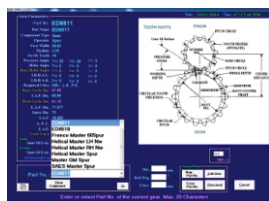
- Mechanical restoration and geometrical alignment as required by machine standards
- Replacement of old electronics with new drive & controller
- With Gear-Soft 5.0 Windows-based gear measurement and analysis software
- Various options are available to suit customer needs like internal / external gear inspection, Cam, cuers, gear sher drums, spline shaft etc.
- All required accessories and fixtures of gear measuring machines are manufactured in-house at our end

## Features

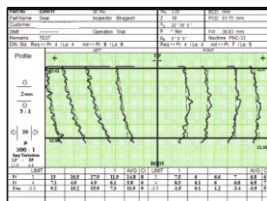
- Low cost up-gradation of old CNC 3 Axis / 4 Axis ear tester with indigenous software and electronics.
- Up-gradation ae possible on most of the old CNC gear checking machines like Klingelnberg, Hofler, M & M, Mahr, Osaka, Maag & others
- Renishaw scanning SP600 – 3D probes
- Use of latest drive & controller from Delta Tau
- Setting of all mechanical parts to achieve required geometrical accuracies up to class 2 of VDI 2612/13 standards
- Highly skill manpower with in-house manufacturing capabilities & Onsite service support

## Software Features

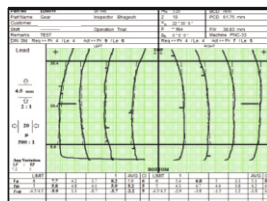
- Online graph plotting, error & DIN class display on screen, standard, crowning, K-Chart type evaluation of gear
- Automatic saving, retrieving & viewing of gear parameters templates. Sequential saving & erasing of graphs
- Platform support any windows operating system, complete reports with analysis



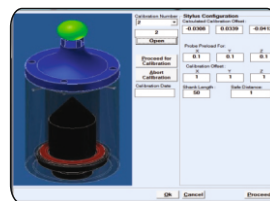
PROFILE MEASUREMENT



LEAD MEASUREMENT

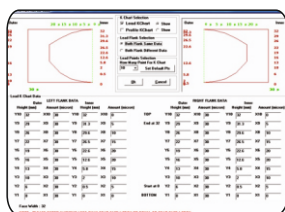


CALIBRATION



TOLERANCE

Required Class	Din Class	Lead	Profile
Lead Error	Profile Error	Profile Error	Profile Error
Lead Error	Profile Error	Profile Error	Profile Error
Lead Error	Profile Error	Profile Error	Profile Error
Lead Error	Profile Error	Profile Error	Profile Error



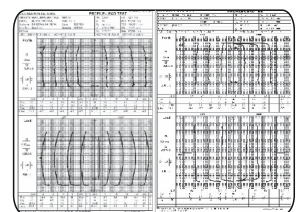
K-CHART



PITCH RUNOUT



CROWNING DETAIL S



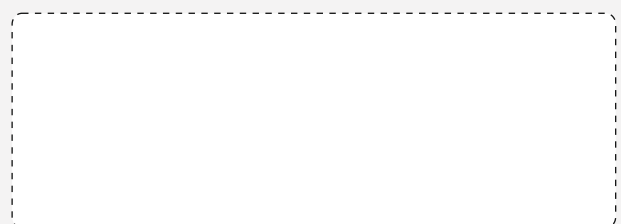
TIP RELIEF



**Accurate Metrology And Automation Company**  
(Formerly "Aditya Engineering Company")

**Head Office :** 67, Hadapsar Industrial Estate, Pune-411 013, Maharashtra, India.  
 +91-20- 6606 9595, +91 86000 23615  
**Works :** A/P - Khalad, Saswad Jejuri Road, Tal. Purandhar, Pune-412 301, India.  
 +91 99700 02528 | [adityaengg@adityaengg.com](mailto:adityaengg@adityaengg.com) | **GST :** 27AACFA5688G1ZA  
 +91 86000 21671 | [www.adityaengg.com](http://www.adityaengg.com) | **PAN :** AACFA5688G

Authorised Distributor :



## ● Sales Branch Offices ●

<b>Pune</b> : +91 99700 02573	<b>Delhi</b> : +91 80107 32455
<b>Nashik</b> : +91 74474 64750	<b>Bhiwadi</b> : +91 95551 81100
<b>Kolhapur</b> : +91 86000 23613	<b>Bengaluru</b> : +91 95903 25411
<b>Gujarat</b> : +91 91759 83127	<b>Chennai</b> : +91 90214 12461
<b>Kolkata</b> : +91 76776 20966	

Note : Due to continuous Improvements at our end, Specifications are subject to change without prior notice.